



★ ≡ RIGHT
STUFF ≡ ★

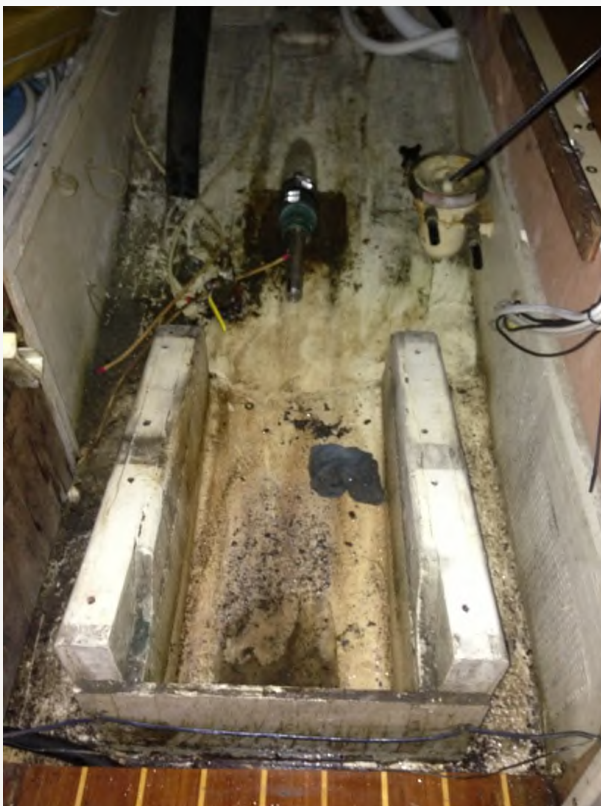
Conversion from Diesel to Electric

The old Yanmar

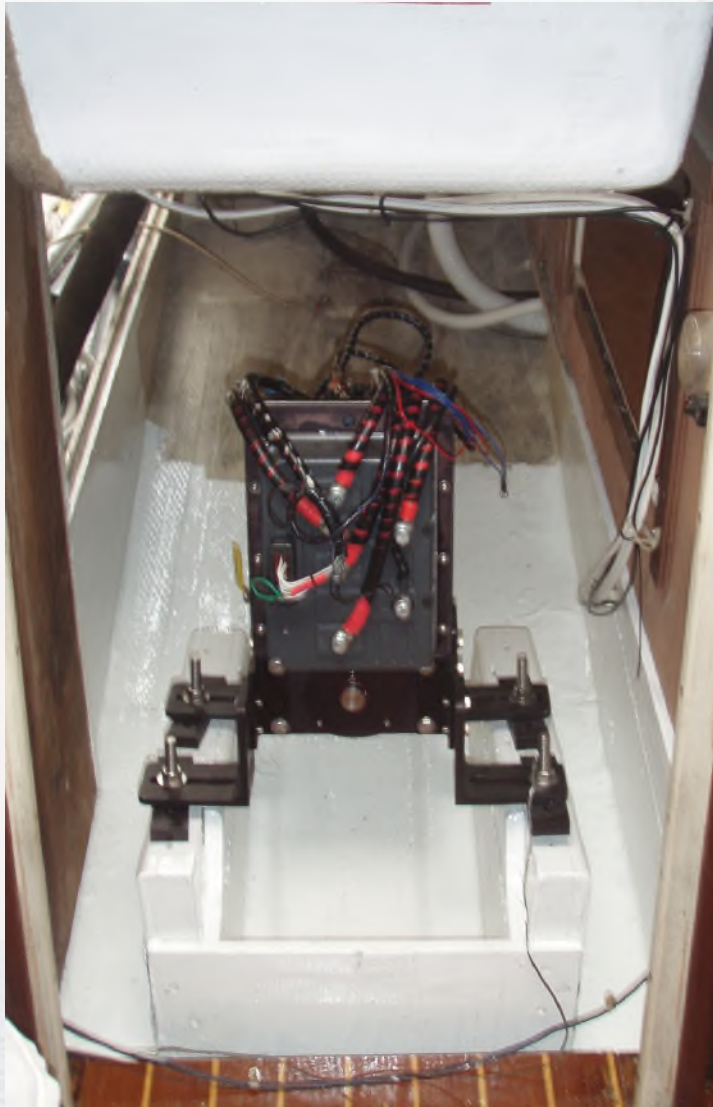


Prop shaft
disconnected

Engine compartment transformation



The installed E-Drive 10.0



Wiring complete



Drive shaft coupling

Removing the old controls and installing the new throttle





The old diesel tank before removal



Fuel tank removed from port side.
Water tank removed from
starboard side. Compartments
prepared and ready for batteries





Starboard battery bank



Port battery bank



Wiring diagram

